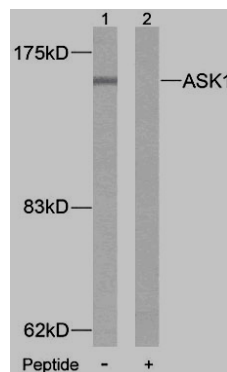




11 Park Drive, Suite 12
Boston, MA 02215

Rabbit anti ASK1 (Ab-83)

- Catalog Number:** AP21125
Amount: 100µl (For 10 Western Blotting)
Form of Antibody: Rabbit IgG in phosphate buffered saline (without Mg²⁺ and Ca²⁺), pH 7.4, 150mM NaCl, 0.02% sodium azide and 50% glycerol.
Storage/Stability: Store at -20°C/1 year
Immunogen: The antiserum was produced against synthesized non-phosphopeptide derived from human ASK1 around the phosphorylation site of serine 83 (G-S^P-V-G).
Purification: The antibody was affinity-purified from rabbit antiserum by affinity-chromatography using epitope-specific immunogen.
Specificity/Sensitivity: ASK1 (Ab-83) antibody detects endogenous levels of ASK1 protein around serine 83.
- Reactivity:** Human
Applications: WB: 1:1000
Swiss-Prot No. : Q99683
References: Mabuchi S, et al. (2004) Endocrinology. 145(1): 49-58.
Yuan ZQ, et al. (2003) J Biol Chem. 278(26): 23432-23440.
Kim AH, et al. (2001) Mol Cell Biol. 21(3): 893-901.



Western blot analysis of extract from MDA-MB- 435 cells, using ASK1 (Ab-83) antibody (AP21125).

For Research Use Only

Contact & Ordering Information: Angio-Proteomie, 11 Park Drive, Suite 12, Boston, MA 02215, USA. Fax: (480) 247-4337, angioproteomie@gmail.com